



5<sup>th</sup> December 2018



## Public notification letter

**To:** Directly affected stakeholders and interested parties

**From:** Global-Mark Pty Ltd

**Subject:** Evaluation of the 'organisation' to *FSC-STD-40-005 V3-1 Requirements for Sourcing FSC Controlled Wood*

**'Organisation':** Pentarch Forestry

**Outline:** As part of the evaluation to *FSC-STD-40-005 V3-1 Requirements for Sourcing FSC Controlled Wood*, Global-Mark seeks stakeholder participation. Please supply your comments regarding the organisation and/or their due diligence system for sourcing non-FSC material via email to the contact listed below. Alternatively, if you wish to provide comments confidentially, there is the opportunity to contact Global-Mark using the contact number listed below.

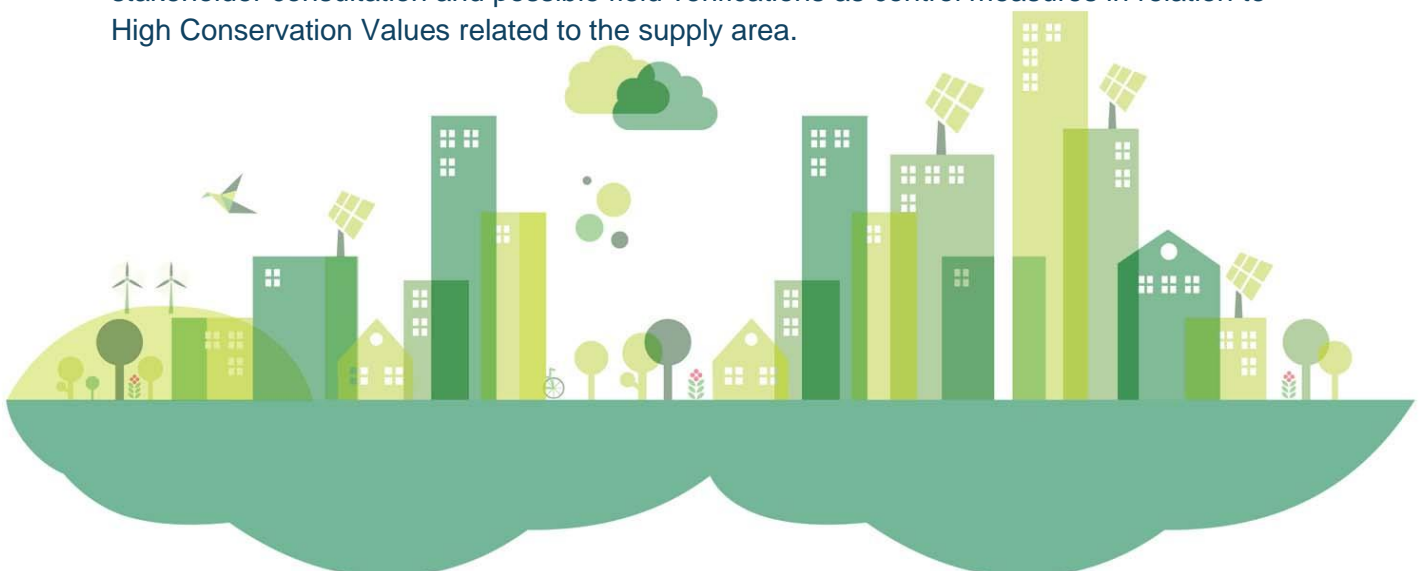
**Details:** The organisation named above seeks Forest Stewardship Council [FSC] Chain of Custody [CoC] with Controlled Wood [CW] certification for their forest processing operations.

Assessment will be against *FSC-STD-40-005 V3-1*. A copy of the standard is available from:

<https://ic.fsc.org/en/certification/requirements-guidance/normative-framework/standards>

The audit will take place at the organisation's office in Eden with field verification audits of a sample of Supply Units of the supply area in the week commencing 23<sup>rd</sup> January 2019.

The organisation is required to maintain a risk mitigation process, which must include stakeholder consultation and possible field verifications as control measures in relation to High Conservation Values related to the supply area.





Global-Mark will conduct an independent audit to assess conformity of the company's risk assessment and verification program for wood sources supplied without a FSC claim, and to verify that stakeholder consultation has been undertaken. This may occur before, during and after the field assessment, and prior to our completion of the audit report.

Access to information that is to be publically available will be available from <https://au.fsc.org> and attached to this letter. Fundamental to this will be the Due Diligence System [DDS] summarised for stakeholders. This will include description of supply areas, risk designation and assessment, and the procedure for filing complaints.

We wish to inform all stakeholders that:

- Should you provide comments then we ask that you consent for their anonymous publication.
- However, we do provide you with the opportunity to comment in confidence.
- All comments provided will be evaluated objectively and meaningfully.
- We will respond with explanation within 30 days of the certification decision.
- An interpretation service is available for non-English speaking stakeholders. Please contact Global-Mark for further information.

**For more information:** Should you require more information about FSC then please go to: [www.fsc.org](http://www.fsc.org)

Global-Mark Pty Ltd is accredited as a certification body to conduct FSC chain of custody certification. It is based in Sydney, Australia and its website is: [www.global-mark.com.au](http://www.global-mark.com.au)

**Contact details:**

Global-Mark address: Suite 4.07, 32 Delhi Road, North Ryde, NSW 2113

Phone: +61 2 9886 0222 Fax: +61 2 9886 0200

Judy Alexander [judy.alexander@global-mark.com.au](mailto:judy.alexander@global-mark.com.au)

We thank you for your involvement.

With kind regards.